
Table of Contents

Part I Overview	2
1 What is Domain Miner ?	2
2 ENABLE word list	2
3 Marketing word list	3
Part II Usage	4
1 Getting started	4
2 Selecting top level domains	5
3 WHOIS server selection	6
4 Selecting a dictionary	7
5 Defining your own word list	8
6 Defining a search word	8
7 Initiating the search	9
Part III About	10
1 Domain Miner	10
2 Bytefusion Ltd.	10

1 Overview

1.1 What is Domain Miner ?

Domain Miner is a data mining tool for internet domain names. It automates the process of finding a domain name by presenting you with a list of choices from an ever shrinking pool of available names. If you are seeking to register a domain name for your business or organization, Domain Miner is for you.



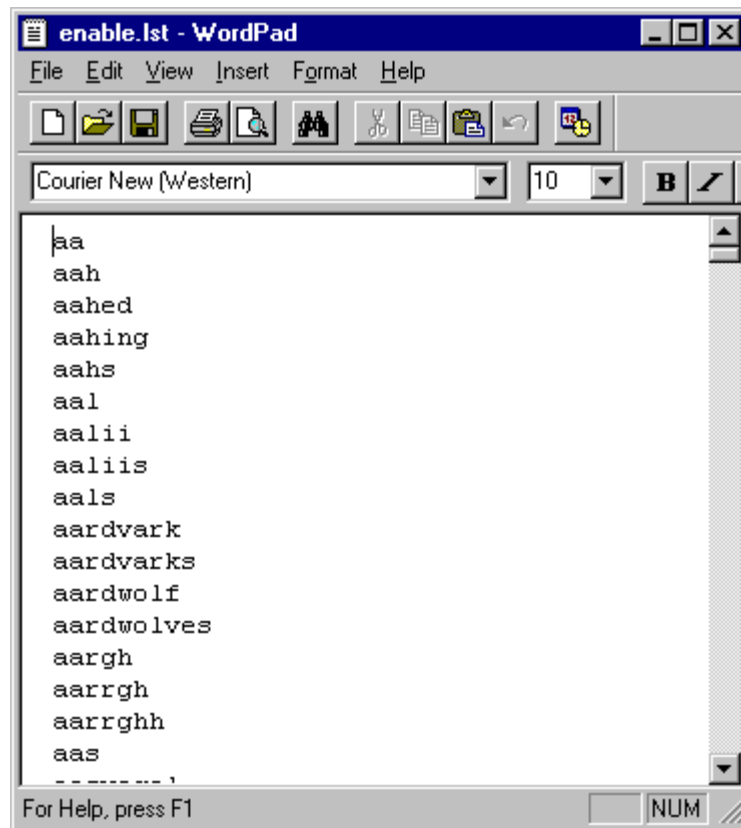
Domain Miner queries WHOIS servers on the public internet for available internet domain names. Possible choices are assembled from key word information provided by you and combined with a word list of marketing power words or the [Enhanced North American Benchmark Lexicon](#). This permits searching on over half a million possible domain name combinations.

1.2 ENABLE word list

The Enhanced North American Benchmark LExicon (ENABLE) is a word list of the English language containing over 172,000 entries, originally conceived as an authoritative reference guide for Scrabble (TM) players.

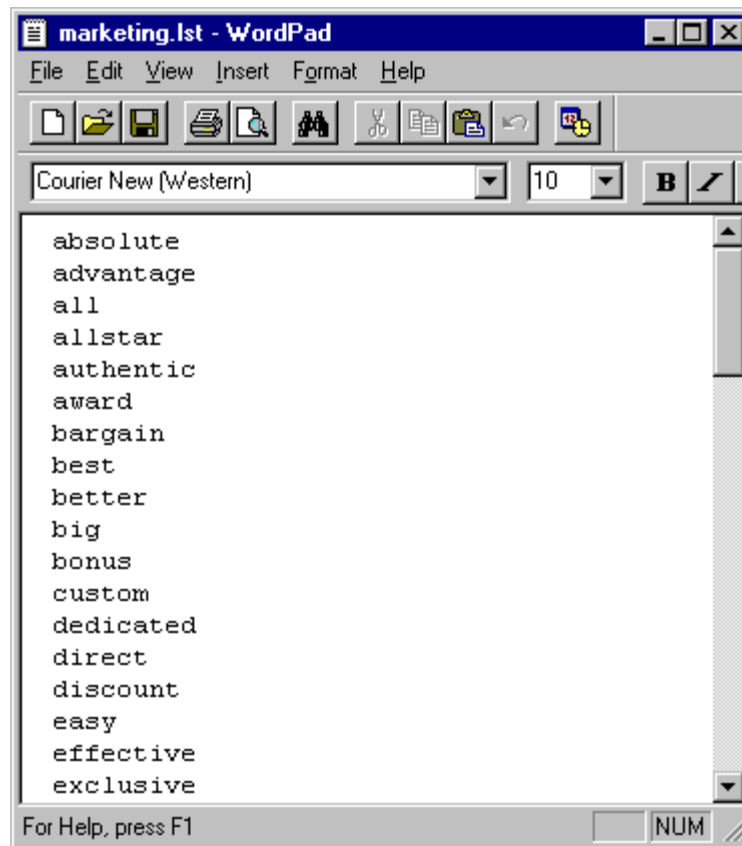
See [Selecting a word list](#) on how Domain Miner uses word lists to find available domain names. Also see [marketing word list](#).

Scrabble is a trademark of Milton Bradley. ENABLE is the work of Alan Beale and M. Cooper and is in the Public Domain. ENABLE is not a trademark.



1.3 Marketing word list

The marketing word list contains commonly used marketing power words, such as "*allstar*", "*award*", "*bargain*", etc. See [Selecting a word list](#) on how Domain Miner uses word lists to find available domain names. See also [ENABLE word list](#).



2 Usage

2.1 Getting started

So you are seeking to register a domain name on the internet ? Let Domain Miner help you find a list of available domain names which pertain to your organization name or business activity based on information you provide. The process is outlined below :

- [Selecting top level domains](#)

A top level domain is a family of domain names. The common domain suffix .com , pronounced "dot com", is such a family of domain names. Before you can register a domain name you need to decide which family or families of domains you want to belong to.

- [Server Selection](#)

Domain Miner ships with a database of WHOIS servers for common top level domains. Most people will want to accept the default database.

- [Selecting a word list](#)

Word lists are used in conjunction with search words to construct a list of possible domain names.

Domain Miner ships with two default word lists: the [Enhanced North American Benchmark Lexicon](#), and a list of [marketing words](#). See also [Defining your own word list](#).

- [Defining a search word](#)

The search word should relate to your organization name or business activity.

- [Initiating the search](#)

This is the final step in the process where Domain Miner submits queries for every possible domain name as per the information you provided.

2.2 Selecting top level domains

A top level domain is a family of domain names. Before you can register a domain name you need to decide which family or families of domains you want to belong to. Simply check all the top level domains you wish to search, and click Next.

Domain Miner - Domain Selection

Please select the top level domains to scan for available names.

Top Level Domain	Description
<input checked="" type="checkbox"/> .com	Check each top level domain that you want to search for availability of domain names. You can check multiple top level domains but need to check at least one.
<input checked="" type="checkbox"/> .org	
<input checked="" type="checkbox"/> .net	
<input type="checkbox"/> .edu	
<input type="checkbox"/> .gov	
<input type="checkbox"/> .mil	
<input type="checkbox"/> .int	
<input type="checkbox"/> .uk	
<input type="checkbox"/> .au	
<input type="checkbox"/> .ca	
<input type="checkbox"/> .de	
<input type="checkbox"/> .fr	

< Back Next > Cancel Help

Some of the common, top level domains and their full names are shown below.

Top Level Domain

- com
- org
- net
- edu
- gov
- mil
- int

Country Specific

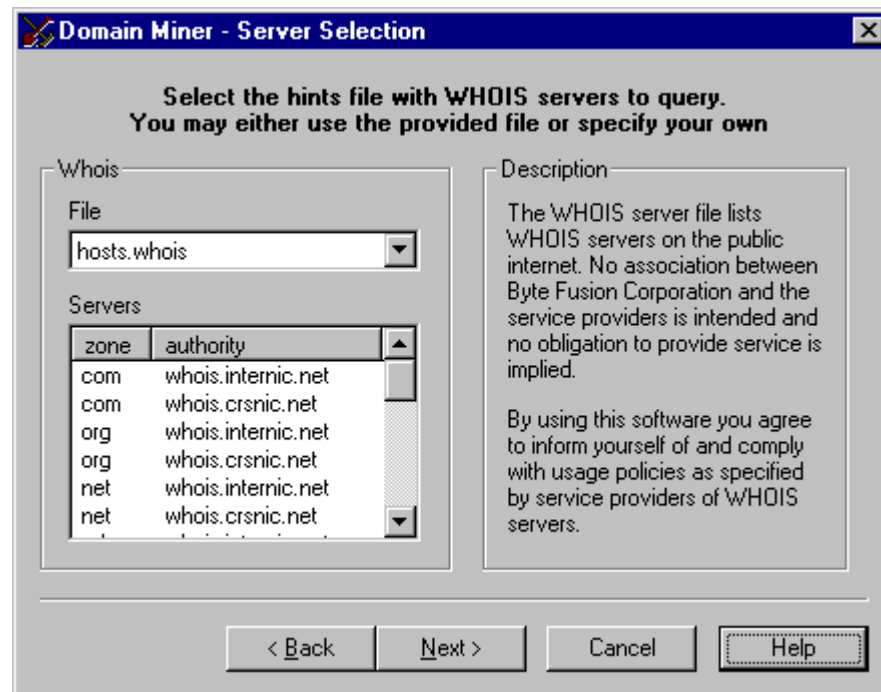
- uk
- au
- ca
- de
- fr
- se
- ch

2.3 WHOIS server selection

The server database **whois.hosts** lists public WHOIS servers on the internet for each of the top level domains supported by Domain Miner. The database is a plain text file in ASCII format and can be edited by hand. The basic format for each database entry is shown below, one entry per line.

domain:server

Most people will want to use the default database, but you may provide your own database file. Simply copy your database file to the installation directory of Domain Miner and ensure that the file name ends in **".hosts"**. Next time you launch Domain Miner, your file will appear in the list of databases available for selection.



2.4 Selecting a dictionary

Domain Miner ships with two word lists, a [marketing word list](#) and the comprehensive [Enhanced North American Benchmark Lexicon](#) with over 172,000 terms. Consider the following scenario:

Suppose your company sells marbles. Further suppose you wish to register the name "marbles.com", and you find that the name "marbles.com" is taken. It is. When this happens, you have a number of options.

Firstly, you could check for the availability of the term "marbles" in other top level domains. For example, if your company is located in the United Kingdom, you might entertain the domain name "marbles.uk". Perhaps your organization acts as a standards body for the manufacture of marbles, rather than selling them commercially. This would suggest the name "marbles.org".

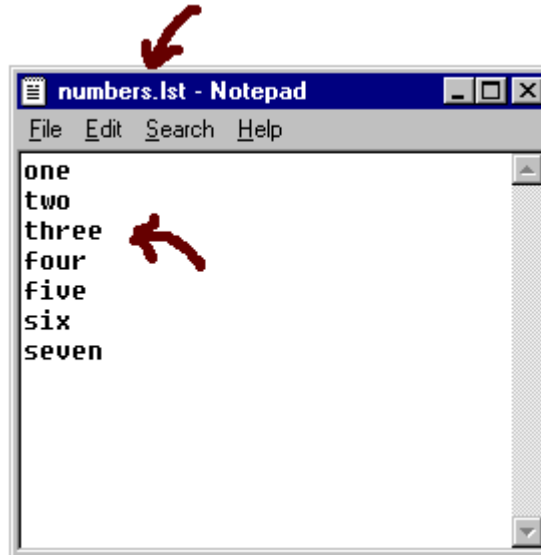
However, if you are a commercial organization engaged in the sale of marbles, you will probably insist on a ".com" domain name. At this point, you can combine the term marbles with terms from a word list. For example, if you chose the marketing word list, Domain Miner will combine "marbles" with commonly used marketing power words to construct possible domain names such as "premiermarbles.com" or "discountmarbles.com" and check for availability of each domain name constructed in this fashion.

If you find that the marketing word list is not comprehensive enough for your purposes, you can employ the Enhanced North American Benchmark Lexicon for your search. If you are conducting a search in a language other than English, or wish to employ words from a specific subject area, such as a medical or legal dictionary, you may [provide your own word list](#).

2.5 Defining your own word list

If you are conducting a search in a language other than English, or wish to employ words from a specific subject area, such as a medical or legal dictionary, you may provide your own word list. Word lists must be in plain text format and contain one word per line. File names must end in ".lst" and should be copied into the installation directory of Domain Miner, usually "C:FilesMiner".

The example shown below defines a mini word list called "numbers.lst" containing seven words, one per line.



2.6 Defining a search word

Defining a search word, or key word, is your most important task. The search word should be memorable and should relate to your business activity or organization name.

Supposing that your organization is engaged in the sale of marbles, see [Selecting a word list](#), your search word would simply be "marbles" as shown in the example below.

- **Enable Hyphenation**

Checks for both, the simple combination of search word and dictionary word as well as the hyphenated combination of search word and dictionary word.

- **Enable Postfix**

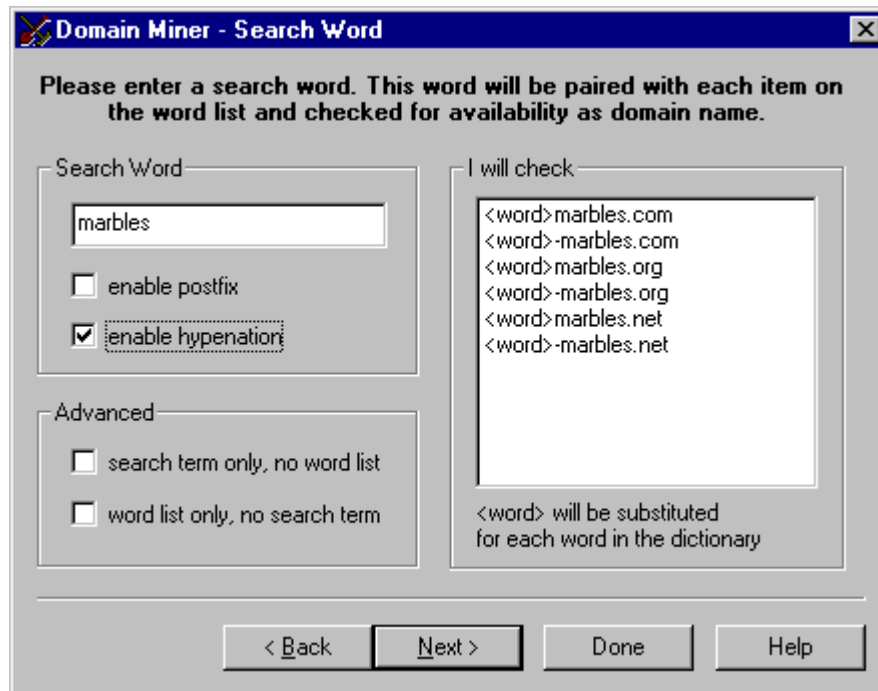
Checks for both, the simple combination of search word and dictionary word as well as the combination of dictionary word and search word.

- **Search Term Only, No Word List**

Disables the use of the word list and checks for the availability of the search term in combination with selected top level domains only.

- **Word List Only, No Search Term**

Disables the use of search terms and checks for the availability of each word in the word list in combination with selected top level domains only.



In the example shown below, the [top level domains](#) "com", "org", and "net" have been selected.

2.7 Initiating the search

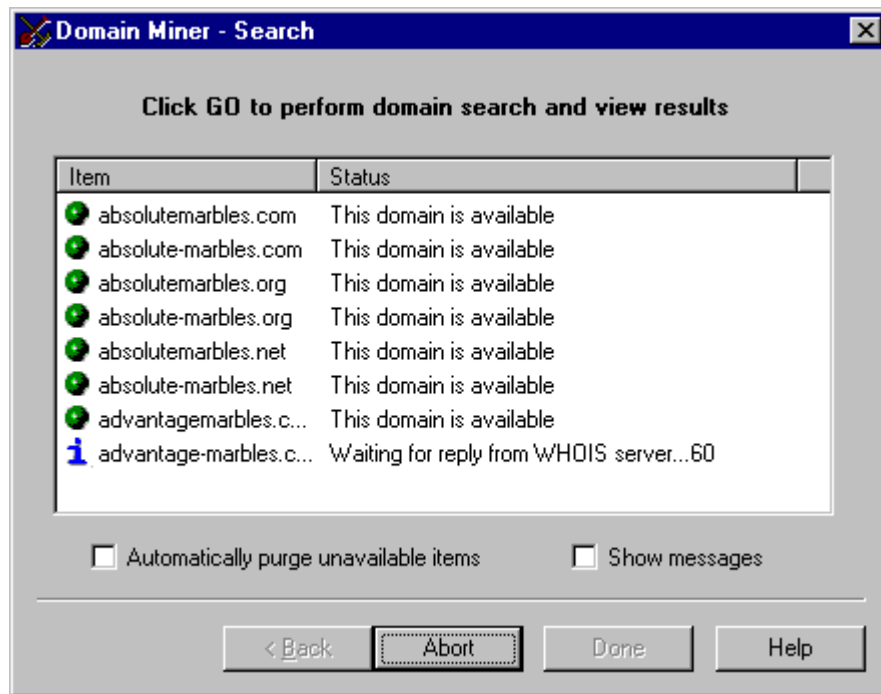
To initiate the search, click "GO" on the Search page.

- **Automatically Purge Unavailable Items**

When this option is checked, only domains which are available are shown. Unavailable domain names are automatically deleted from the list.

- **Show Messages**

When this options is checked, a pop-up window displays every reply as received from the WHOIS server.



3 About

3.1 Domain Miner



Domain Miner
Version 1.1
Copyright © 2000-2004, Bytefusion Ltd.
All Rights Reserved.

3.2 Bytefusion Ltd.



**Bytefusion Ltd.
22 Duke Street
Douglas, IOM
IM1 2AY
British Isles**

Inquiries: sales@bytefusion.com